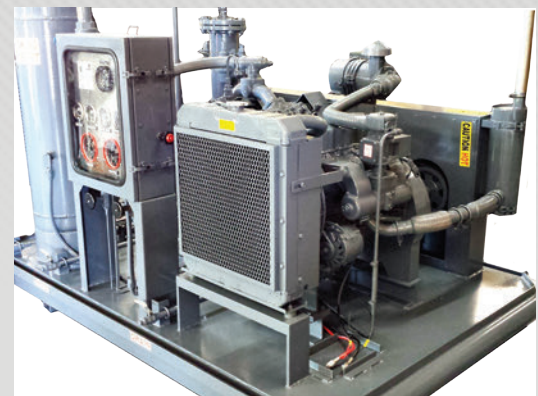




THE **ECONOMICAL** SOLUTION FOR YOUR **GAS COMPRESSOR NEEDS**

Since 2005, JBL has specialized in oilfield equipment by natural gas engines featuring our own electronic controls to automate and monitor our packages. Our business, located in Fort Smith, Arkansas, includes package fabrication, parts, and service for natural gas compressors, pumping unit drivers, water pumps, hydraulic power units, and more.

- Slow speed operation requires less maintenance, produces more mcf per horsepower.
- Valve design lets machine run efficiently at lower temperatures.
- Lubricating system features advanced design oil pump and heavy duty oil filter for improved life and reliability.
- Fully counterweighted ductile iron crankshaft is precision ground.
- Crankshaft connecting rods are rifle drilled to assure positive pressure lubrication to all critical wear areas.
- Heavy duty disc type valves with Swedish steel discs, cast iron bumpers and seats for long life.
- Rebuildable high strength aluminum alloy connecting rods equipped with replaceable automotive type inserts.
- Piston pin needle bearings for strength and long life.
- Crankshaft ends are supported by large Timken tapered roller main bearings to withstand radial and thrust loads.
- Large fan-type pulley for smooth running and efficient heat dissipation.



MODEL	MAX MCFD	MAX DISCHARGE PSI
SINGLE STAGE COMPRESSION		
GCP-240-50 QRNG	237	100
GCP-270-50 QRNG	397	100
GCP-4125-50 QRNG	793	100
TWO STAGE COMPRESSION		
GCP-325-30 QRNG	87	400
GCP-340-30 QRNG	138	400
GCP-350-30 QRNG	167	400
GCP-370-30 QRNG	199	400
GCP-5120-15 QRNG	260	400